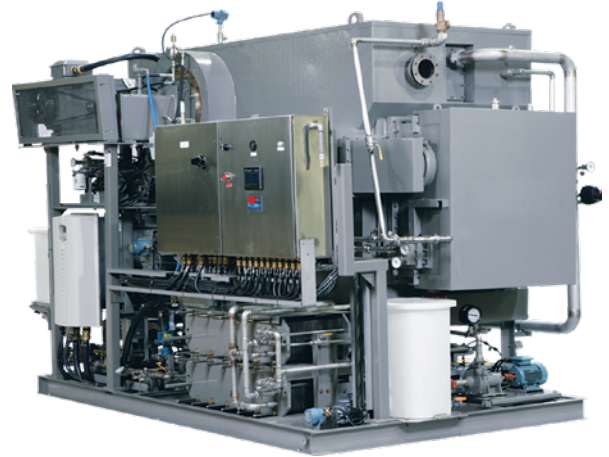


SV-SERIES SEAWATER DISTILLERS

OFFSHORE FRESH WATER SYSTEMS

INNOVATIVE TECHNOLOGY

Aqua-Chem SV-Series vacuum vapor compression distillation systems improve distillation process performance by lowering the evaporation operating temperature. This minimizes the formation of scale, improves heat transfer efficiency, and reduces maintenance and chemical cleaning cycles.



DESIGN FEATURES

- Our compressors use high-speed journal bearings to ensure maximum life. In addition, thin film oil technology protects the bearings and shaft from wear. Materials of construction include titanium impellers and 90/10 CuNi or stainless steel housing.
- The vapor compression process uses its own compressed steam as its primary heat source, resulting in vastly improved efficiency.
- Our components are made of the strongest, most durable materials available to extend system life. Evaporation shells include 90/10 copper nickel or stainless steel, while our evaporator tubes are made with titanium and copper nickel, or duplex stainless steel and aluminum brass. All the piping in our vacuum vapor compression distillers consists of copper nickel, stainless steel or bronze.

THE AQUA-CHEM ADVANTAGE

Custom engineering is available to meet international electrical codes, rig specifications, and unique operating conditions.

Distillation can be used in any seawater condition, regardless of salinity, temperature or silt. Distillation produces the most consistent, high-quality water, with less than 5 ppm TDS.

Aqua-Chem distillers have set the standard for innovations that reduce maintenance costs and downtime, while increasing operating life. We have units that continue to provide excellent service after more than 30 years of operation.

All major components are accessible from floor level with the compressor and pumps located at the edge of the skid for easy serviceability.

STANDARD MODELS	SV30	SV50	SV70	SV100
CAPACITY (M ³ / DAY)	30m ³	50m ³	70m ³	100m ³
L x W X H (feet)	7.2 x 9.7 x 9.6	7.2 x 9.7 x 9.6	7.2 x 11.7 x 9.6	7.2 x 11.7 x 9.6
(meters)	2.2 x 3.0 x 2.9	2.2 x 3.0 x 2.9	2.2 x 3.6 x 2.9	2.2 x 3.6 x 2.9
WEIGHT (LBS/KG)	10,000 (4,450)	15,000 (6,800)	18,000 (8,170)	21,000 (9,545)



CONTACT US:
(800) 964-7035
sales@aqua-chem.com
www.aqua-chem.com

