

# BRACKISH WATER REVERSE OSMOSIS (RO) MEMBRANES



## LG BW 4021 UES

Ultra Low Energy



### OVERVIEW

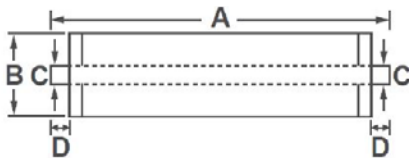
LG Chem's NanoH<sub>2</sub>O™ brackish water RO membranes serve various municipal and industrial applications and have been operating in the major utilities around the world. Incorporating innovative Thin Film Nanocomposite (TFN) technology, all LG BWRO membranes provide superior performance along with intrinsic anti-fouling property and are suitable for applications where consistent and reliable performance is a must.

LG BW UES membranes offer high permeability at ultra low feed pressure, significantly reducing operating costs: suitable for low salinity brackish water applications.

### PRODUCT SPECIFICATIONS

Active Membrane Area, ft <sup>2</sup> (m <sup>2</sup> )	Permeate Flow Rate, GPD (m <sup>3</sup> /d)	Stabilized Salt Rejection, %	Minimum Salt Rejection, %	Feed Spacer, mil
35 (3.3)	1,000 (3.8)	99.0	98.0	28

Test Conditions : 500 ppm NaCl at 25°C (77°F), 100 psi (6.9 bar), pH 7, Recovery 8%.  
Permeate flows for individual elements may vary -15%.



A, mm (in.)	B, mm (in.)	C, mm (in.)	D, mm (in.)	Weight kg (lbs.)
533 (21)	100 (3.9)	19 (0.75)	29 (1.1)	2.3 (5.1)

### OPERATING SPECIFICATIONS

Max. Applied pressure	600 psi (41 bar)
Max. Chlorine concentration	< 0.1 ppm
Max. Operating temperature	45°C (113°F)
pH Range, Continuous (Cleaning)	2-11 (2-12)
Max. Feedwater turbidity	1.0 NTU
Max. Feedwater SDI (15 mins)	5.0
Max. Feed flow	16 gpm (3.6 m <sup>3</sup> /h)
Max. Pressure drop (ΔP) for each element	15 psi (1.0 bar)

The information and data contained herein are deemed to be accurate and reliable and are offered in good faith, but without guarantee of performance. Please contact Aqua-chem for expert advice and technical support.



CONTACT US:  
**(800) 964-7035**  
[sales@aqua-chem.com](mailto:sales@aqua-chem.com)  
[www.aqua-chem.com](http://www.aqua-chem.com)