

BRACKISH WATER REVERSE OSMOSIS (RO) MEMBRANES



LG CW 4040 SF



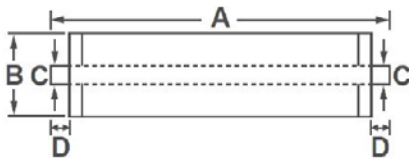
OVERVIEW

LG CW 4040 SF RO membranes qualify for car wash industry and other various commercial applications. LG CW 4040 SF RO membranes, incorporated with innovative Thin Film Nanocomposite (TFN) technology, offer high productivity at ultra low feed pressure and good salt rejection. The membranes are available in industry standard 4"x40" configuration and can easily fit into existing or new industry RO systems.

PRODUCT SPECIFICATIONS

Active Membrane Area, ft ² (m ²)	Permeate Flow Rate, GPD (m ³ /d)	Stabilized Salt Rejection, %	Minimum Salt Rejection, %	Feed Spacer, mil
85 (7.9)	2,900 (11.0)	99.0	98.0	28

Test Conditions : 500 ppm NaCl at 25°C (77°F), 100 psi (6.9 bar), pH 7, Recovery 15%.
Permeate flows for individual elements may vary -15%.



A, mm (in.)	B, mm (in.)	C, mm (in.)	D, mm (in.)	Weight kg (lbs.)
1,016 (40)	100 (3.9)	19 (0.75)	29 (1.1)	4.0 (8.8)

OPERATING SPECIFICATIONS

Max. Applied pressure	600 psi (41 bar)
Max. Chlorine concentration	< 0.1 ppm
Max. Operating temperature	45°C (113°F)
pH Range, Continuous (Cleaning)	2-11 (2-12)
Max. Feedwater turbidity	1.0 NTU
Max. Feedwater SDI (15 mins)	5.0
Max. Feed flow	16 gpm (3.6 m ³ /h)
Max. Pressure drop (ΔP) for each element	15 psi (1.0 bar)

The information and data contained herein are deemed to be accurate and reliable and are offered in good faith, but without guarantee of performance. Please contact Aqua-chem for expert advice and technical support.



CONTACT US:
(800) 964-7035
sales@aqua-chem.com
www.aqua-chem.com