

SEAWATER REVERSE OSMOSIS (RO) MEMBRANES



LG SW 400 SR G2



OVERVIEW

The next generation LG SW G2 membranes have achieved record breaking salt rejection, improving the product quality up to 45% compared with the conventional technology. With enhanced Thin Film Nanocomposite (TFN) technology, LG SW G2 membranes can significantly reduce the cost of desalination.

LG SW SR (Super Rejection) membranes offer the highest rejection for the best product water quality; suitable for high salinity seawater applications.

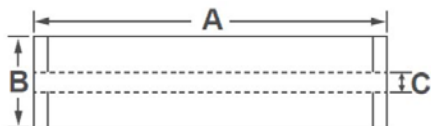
LG SW G2 Benefits

- ▶ Improved permeate quality without increasing operating pressure
- ▶ Reduced energy cost without sacrificing the permeate quality
- ▶ Reduced capital and operation costs for multi pass SWRO systems

PRODUCT SPECIFICATIONS

Active Membrane Area, ft ² (m ²)	Permeate Flow Rate, GPD (m ³ /d)	Stabilized Salt Rejection, %	Minimum Salt Rejection, %	Boron Rejection, %	Feed Spacer, mil
400 (37)	6,000 (22.7)	99.89	99.75	93	28 or 34

Test Conditions : 32,000 ppm NaCl, 5 ppm boron at 25°C (77°F), 800 psi (55 bar), pH 8, Recovery 8%.
Permeate flows for individual elements may vary 15%.



A, mm (in.)	B, mm (in.)	C, mm (in.)	Weight kg (lbs.)
1,016 (40)	200 (7.9)	28.6 (1.125)	16 (35)

OPERATING SPECIFICATIONS

Max. Applied pressure	1,200 psi (82.7 bar)
Max. Chlorine concentration	< 0.1 ppm
Max. Operating temperature	45°C (113°F)
pH Range, Continuous (Cleaning)	2-11 (2-13)
Max. Feedwater turbidity	1.0 NTU
Max. Feedwater SDI (15 mins)	5.0
Max. Feed flow	75 gpm (17 m ³ /h)
Min. Ratio of concentrate to permeate flow for any element	5 : 1
Max. Pressure drop (ΔP) for each element	115 psi (1.0 bar)

The information and data contained herein are deemed to be accurate and reliable and are offered in good faith, but without guarantee of performance. Please contact Aqua-chem for expert advise and technical support.



CONTACT US:
(800) 964-7035
sales@aqua-chem.com
www.aqua-chem.com